

Climate Change

Serious and lasting changes in the global climate because of the increasing average temperature-- global warming

The global average temperature is now about 1° C hotter than the pre-industrial period

Causes

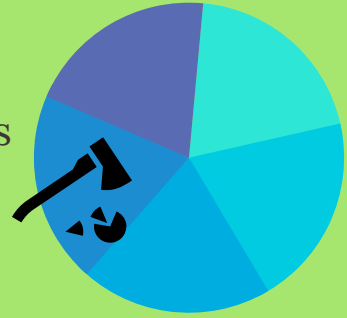


Greenhouse emissions



Trees absorb carbon dioxide

Logging and burning trees create 1/5 of climate change



Effects



Floods

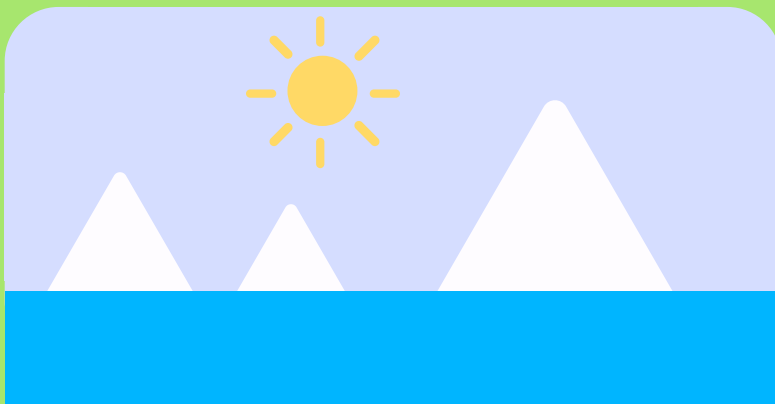


Droughts

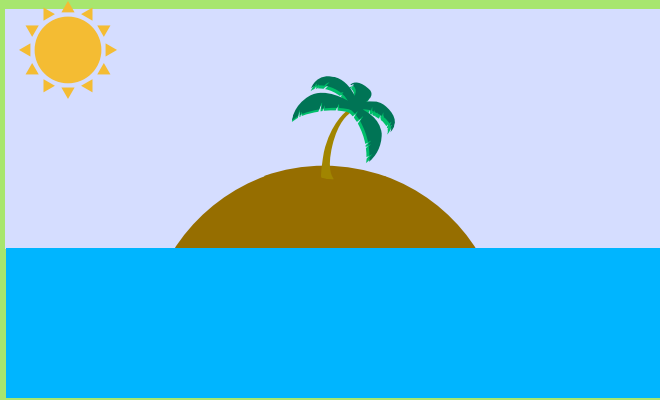


CO₂ has increased in the atmosphere by 36% in the last 200 years

Air pollution



Glaciers, that supply millions of people with water, are melting



Sea level rise

As glaciers melt sea levels rise resulting in floods



Extinction Threats



1 in every 6 species may face extinction with the rising of the global temperature to 4.3°C

Solutions

What can you do?

Use eco-friendly transportation

20% of greenhouse emissions come from the transportation sector



5 Billion of carbon dioxide



Avoid air travel

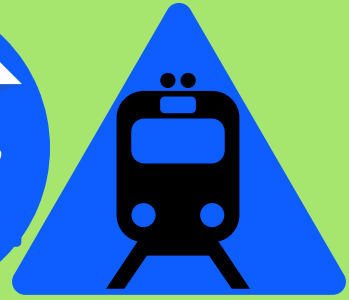
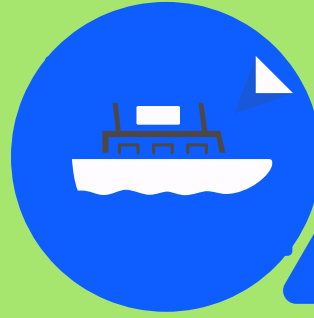


1 San Francisco to
Tokyo round-trip



2 tons of carbon dioxide
per capita

Use train or Ferry



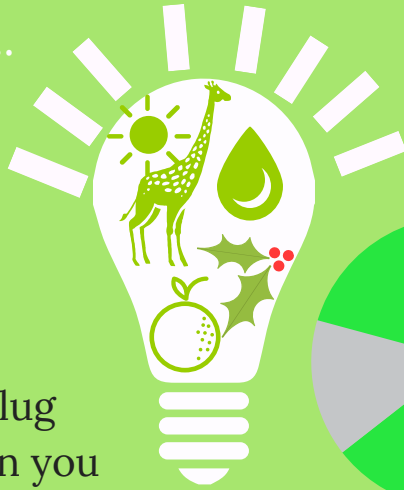
What else can you do?

Save energy....

...Save money!



Switch off+unplug
compliances when you
don't use them



Energy efficient
lighting (e.g. LEDs)
uses up to 80% less
energy and lasts
longer

Renewable energy



Use photovoltaics to
heat water and power
your house



programmable thermostats
change temperatures when
you go to work
and sleep

Sources:
<http://www.greenpeace.org/international/en/campaigns/climate-change/about/>
<http://www.greenpeace.org/international/en/campaigns/climate-change/about/The-cause/>
<http://www.greenpeace.org/international/en/campaigns/climate-change/Solutions/What-you-can-do/>
<http://www.greenpeace.org/international/en/campaigns/climate-change/impacts/>